



## Parker's Church of England Primary Academy

Executive Headteacher: Mrs Sarah Disney

Pound Hill, Saham Toney, Thetford, Norfolk, IP25 7HP

Tel: 01953 881601 Email: [office@parkers.norfolk.sch.uk](mailto:office@parkers.norfolk.sch.uk) Web: [www.parkers.norfolk.sch.uk](http://www.parkers.norfolk.sch.uk)

23<sup>rd</sup> April 2021

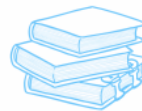
Dear Parents/Carers,

### Reading at home

Thank you to those parents who are regularly listening to their children reading at home. Listening to your child read at home has massive benefits to their learning in all subject areas. I have attached below some top tips that you might be able to use at home when listening to your child read.

## Top Tips

### For Reading with Your Child at Home



As we all know, there is a lot more to reading than just reading! Here are some tips to help during reading sessions with your child at home.

- What is happening? Talk about what is happening in the pictures before you read the text. What can you see?
- Discuss the meaning of words. Use a dictionary to get your child used to exploring words for themselves.
- Discuss alternative words. For example, 'big'. Ask your child to think of another word that means the same, e.g. 'huge' (use a thesaurus).
- Make predictions. What do you think will happen next? What makes you think that?
- Start at the end of the book. What do you think has happened before this point? Why do you think that?
- Discuss feelings. How do you think the characters are feeling? What has made them feel this way?
- Where is the story set? Have you read another story with the same setting? For example, 'We're Going on a Bear Hunt' by Michael Rosen and 'The Gruffalo' by Julia Donaldson are both set in the woods.
- Discuss the problem in the story. What has happened? What went wrong?
- Discuss the resolution. How was the problem solved? Is there another way it could have been resolved?
- Fact or fiction? Is this book a story book or a non-fiction book? How do you know?
- What have you learnt? What do you know now that you didn't know before reading the book?

#### **During Reading**

Encourage children to use expression when reading, especially for the voices of different characters.

Discuss the punctuation on the page, for example, exclamation marks. Ask: what are these for? What should you do when you see an exclamation mark?

You do not always have to read the entire book every night. Focus on 2 pages and talk about the characters, setting, and plot in a lot of detail. You might want to take it in turns to read so your child can hear how you read.



---

## Parker's Church of England Primary Academy

Executive Headteacher: Mrs Sarah Disney

Pound Hill, Saham Toney, Thetford, Norfolk, IP25 7HP

Tel: 01953 881601 Email: [office@parkers.norfolk.sch.uk](mailto:office@parkers.norfolk.sch.uk) Web: [www.parkers.norfolk.sch.uk](http://www.parkers.norfolk.sch.uk)

### Online Safety

Please see on the reverse of the newsletter two online safety guides about setting up parental controls to limit age-inappropriate content on android and I-Phone devices. This is also available on the school website.

A number of children in school are currently talking about the games that they are playing at home. Many of these have age ratings, which are much older than the children's age. If you require more information about these games, please see our website for our parent's online safety guides. If there is not a guide for the game/app you want further information about please get in touch as we may have access to the guide you require.

### Next Year

During this week's, parent consultations many parents have asked about next year and our class structures and who will be teaching their children. This is something that we are currently working on and will let you know as soon as we have it finalized.

### Sports Day

We are hoping to be able to hold a Covid safe sports day towards the end of the term. I will let you know the date as soon as possible. We may have to hold this behind closed doors without family members in attendance but if possible, we will try to allow you to be able to attend.

Kind regards

Mrs Sarah Disney

Executive Headteacher

## Parker's Church of England Primary Academy

Executive Headteacher: Mrs Sarah Disney

Pound Hill, Saham Toney, Thetford, Norfolk, IP25 7HP

Tel: 01953 881601 Email: [office@parkers.norfolk.sch.uk](mailto:office@parkers.norfolk.sch.uk) Web: [www.parkers.norfolk.sch.uk](http://www.parkers.norfolk.sch.uk)

### How to Set up PARENTAL CONTROLS to limit age-inappropriate CONTENT iPhone

**NOS National Online Safety**  
www.nationalonlinesafety.com

The parental controls on iPhones allow you to block or restrict certain apps, features, content, downloads, or purchases. Setting limitations on content ratings, Siri and web searches enables you to filter out age-inappropriate content and vastly reduce the likelihood of your children being exposed to unsuitable material and information.

#### 18+ Set up content rating restrictions

Content filters keep your child from viewing unsuitable material. They block apps, films and TV shows with specific age ratings, and music and podcasts with explicit content.

- 1 Open Settings
- 2 Tap Screen Time
- 3 Enable Content & Privacy Restrictions
- 4 Tap Content Restrictions
- 5 Choose the Settings for each feature you wish to restrict

#### Set up web restrictions

Website content filters restrict age-inappropriate content on Safari. You can also blacklist certain websites or allow access only to approved sites.

- 1 Open Settings
- 2 Tap Screen Time
- 3 Tap Content & Privacy Restrictions
- 4 Tap Content Restrictions
- 4 Tap Web Content
- 5 Choose between Unrestricted Access, Limit Adult Websites and Allowed Websites Only
- 7 Choose which websites you wish to allow/block

#### Set up Siri web search restrictions

You can screen out explicit language to avoid Siri displaying inappropriate results. You could also disable Siri entirely, so your child can't use it to search the web.

- 1 Open Settings
- 2 Tap Screen Time
- 3 Tap Content & Privacy Restrictions
- 4 Tap Content Restrictions
- 5 Scroll Down to Siri
- 6 Choose to block either or both Web Search Content and Explicit Language

## Parker's Church of England Primary Academy

Executive Headteacher: Mrs Sarah Disney

Pound Hill, Saham Toney, Thetford, Norfolk, IP25 7HP

Tel: 01953 881601 Email: [office@parkers.norfolk.sch.uk](mailto:office@parkers.norfolk.sch.uk) Web: [www.parkers.norfolk.sch.uk](http://www.parkers.norfolk.sch.uk)

# How to Set up PARENTAL CONTROLS to limit age-inappropriate CONTENT Android Phone

CONTENT  
Android Phone

www.nationalonlinesafety.com

The settings on an Android device allow you to prescribe certain rules for when your child is using it. For example, you can block specific types of content to reduce the risk of your child being exposed to age-inappropriate material (music with explicit lyrics, for instance, and games, TV shows or movies that are unsuitable for young people). There are two ways to access parental controls on an Android phone: through Google Play or via the Google Family Link app. You can also lock your changes behind a PIN, so your child (or anyone else) can't change them back.

### Set up parental controls with Google Play

- 1 Open the Play Store app
- 2 Tap Menu (represented by three horizontal lines)
- 3 Tap Settings
- 4 Tap Parental Controls
- 4 Enable Parental Controls
- 4 Create Pin
- 4 Tap the content you would like to restrict
- 4 Choose how to filter or restrict access

### Set up parental controls with Google Family Link

- 1 On your phone, install Google Family Link for Parents
- 2 Tap Open and review the information
- 3 Tap Get Started
- 4 Tap Next to set up your child's device
- 5 On your child's phone, download Google Family Link for Children & Teens and enter the Family Link setup code provided
- 6 On your phone, open the Family Link app
- 7 Tap your child's name
- 8 Tap Manage Settings
- 9 Tap Controls on Google Play
- 10 Tap the content you would like to restrict
- 11 Choose how to filter or restrict access