



Parker's Church of England Primary Academy

Executive Headteacher: Mrs Sarah Disney

Pound Hill, Saham Toney, Thetford, Norfolk, IP25 7HP

Tel: 01953 881601 Email: office@parkers.norfolk.sch.uk Web: www.parkers.norfolk.sch.uk

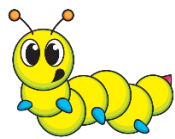
18th November 2022

Dear Parents/Carers

Dates for your Diary

13 th Dec	-	Christmas Dinner and Christmas Jumper Day
12 th Dec	-	Nativity Play EYFS & KS1 2.15 to 3.15pm (more details to follow)
13 th Dec	-	Nativity Play EYFS & KS1 9.30 to 10.30am (more details to follow)
15 th Dec	-	Disco (more details to follow)
16 th Dec	-	Christmas Service 2.00pm in the church
4 th Jan 2023	-	Children return to school

Attendance this week



Caterpillar Class

86.87%



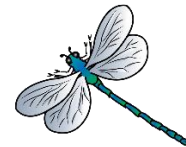
Butterfly Class

94.15%



Firefly Class

94.74%



Dragonfly Class

94.05%

Congratulations to Firefly Class for having the best attendance figures this week.

Mobile Phones

This is a reminder that parent's and carer's should not be using their mobile phones whilst on the school premises, this is in the school, or on the playground.

School Photographs

You have received the proofs of your child/ren's photos, if you would like to order any please order online or fill in the envelope and return to the office by Friday 25th November at the latest as the order is placed the following day in order to get the photos before Christmas.

Children in Need

Thank you for supporting Children in Need, we have raised £64.60. The children are looking very spotty today!

Parker's Church of England Primary Academy

Executive Headteacher: Mrs Sarah Disney

Pound Hill, Saham Toney, Thetford, Norfolk, IP25 7HP

Tel: 01953 881601 Email: office@parkers.norfolk.sch.uk Web: www.parkers.norfolk.sch.uk

Poppy Appeal

Thank you for supporting the Poppy Appeal, we are just waiting to hear how much we have raised.

Dragonfly Class walked to the church to hold the two-minute silence at the War Memorial.



Celebrating Pupil's Success

Caterpillar Class

This week in Caterpillar Class we have been learning about rectangles and squares and comparing their properties. We enjoyed having the Jewish visitors come into class for Interfaith week. We had a chance to wear a tallit and a kippah (scarf and hat). We listened to a story about a Jewish boy and the importance of following the rules in the Torah. We have also talked about reaching out for Anti-bullying and we discussed making sure we tell people if others are unkind.





Parker's Church of England Primary Academy

Executive Headteacher: Mrs Sarah Disney

Pound Hill, Saham Toney, Thetford, Norfolk, IP25 7HP

Tel: 01953 881601 Email: office@parkers.norfolk.sch.uk Web: www.parkers.norfolk.sch.uk

Butterfly Class

First	Then	Now
there were 5 birds.	1 bird flew away	they are 4 birds in the tree.
5	- 1	= 4

Firefly Class

L.O: Present perfect tense

starter - a or an

I had an egg.

I had a cupful of flour.

I had a teaspoon of vanilla extract.

It has been very sunny today.

Oh no! Fox has tried to eat Magpie.

They have eaten all the food.

Dog has won the race.

Fox has lived in the forest for many years.

"Have you chosen to eat me?" asked Magpie.

Dog has gone to hunt for food.



Parker's Church of England Primary Academy

Executive Headteacher: Mrs Sarah Disney

Pound Hill, Saham Toney, Thetford, Norfolk, IP25 7HP

Tel: 01953 881601 Email: office@parkers.norfolk.sch.uk Web: www.parkers.norfolk.sch.uk

Dragonfly Class

Wednesday 16th November 2022

Can I use a Semi Colon to mark a boundary?

Flashback - vocabulary 74

a. Circle the word closest in meaning to **evidence**.

seen	basin	proof ✓
------	-------	---------

b. Circle the word closest in meaning to **accident**.

ambulance ✓	accent	misfortune
-------------	--------	------------

c. Circle the word meaning the opposite of **factor**.

sum ✓	multiple ✓	crowd
-------	------------	-------

d. Circle the word meaning the opposite of **knowledge**.

ignorance ✓	importance	shelf
-------------	------------	-------

e. Circle the correct prefix to change the word **interest** to mean **fairness**.

dis- ✓	in-	un-
--------	-----	-----

f. Circle the correct suffix to change the word **believe** to mean **convincing**.

-ness	-able ✓	-ous
-------	---------	------

The raft lay motionless to a rock...; something more in the shadows.

I couldn't go on; my energy was spent.

Friends of Parkers Primary School

Class Christmas Hampers

It's that time of year where each class competes for the best Christmas Hamper!

The Class Hampers are then raffled off (£1 a ticket) so you have the chance to win one in time for Christmas. All we ask is if you can bring in an item for the hamper and leave it in the class Christmas box...some past ideas are: Christmas Book, Teddy, Food or a Bottle of Fizz. Any items are greatly received.

Kind Regards

Mrs Sarah Disney

Executive Head Teacher